

SHAPESHIFT®

CORE CARRY PACK

CONVENIENT STARTER KIT
Our innovative injection-molded holster shell system consists of a tool-free design that provides the flexibility of four distinct carry options.

MULTIPLE CONFIGURATIONS
Tailor your carry experience with multiple configurations including IWB, appendix IWB, OWB slide, and OWB paddle.

MODULAR HOLSTER SYSTEM
Embrace convenience by easily changing holster configurations and style with just a few quick steps.



CLOAK

3.5 IWB HOLSTER

ADVANCED CONCEALMENT
The 3.5's low-profile, form-fitting design conceals a weapon inside the waistband, minimizing printing for a discreet and confident carry experience.

BREATHABLE COMFORT
Stay dry throughout the day with our CoolVent™ Neoprene, a perforated material with a soft cushioning layer.

SWAPPABLE SHELL
Quickly exchange one custom-molded shell for another to carry different handguns with the same holster base.

CLOAK

CHEST HOLSTER

OUTDOOR ADVENTURES
Designed for outdoor activities and offers quick access while keeping your waist and shoulders unobstructed.

COMFORTABLE AND SECURE FIT
Features an adjustable nylon harness, breathable CoolVent neoprene layer and reinforced ballistic nylon for durability.

CUSTOMIZABLE RETENTION
Custom-molded for specific firearms with adjustable passive retention and a 45-degree cant for a smooth, natural draw.



CONTACT US

CUSTOMER SERVICE 4411 W. Riverbend Ave.
Post Falls, ID 83854
208-215-2046

DEALER SALES 208-618-8300
dealers@aliengearholsters.com

LAW ENFORCEMENT SALES lesales@aliengearholsters.com

MILITARY/GOVERNMENT SALES military@aliengearholsters.com

INTERNATIONAL SALES international@aliengearholsters.com

About Tedder Industries

Founded in 2013, Tedder Industries is a worldwide leader in civilian, law enforcement and military holsters, life-saving tactical gear and accessories. Headquartered in Post Falls, Idaho, Alien Gear Holsters are fully operational and manufactured in a 50,000 sq. ft. facility. Their law enforcement and military renowned experts develop, engineer, test and patent professional-grade duty holster innovation that drives advancements in durable consumer holster standards across the nation and around the globe - making every day firearm carry safer, smarter and more comfortable. Tedder Industries has won numerous industry awards and ranks among the world's most trusted manufacturers of handgun holsters both for consumers and professionals including military, government agencies, law enforcement and private security.



EVERY ALIEN GEAR HOLSTER IS
MADE IN AMERICA

ALIENGEARHOLSTERS.COM



ALIEN GEAR HOLSTERS

ADAPT TO EVERY ENVIRONMENT™

ADAPT.



PRODUCT GUIDE

Alien Gear Holsters is driven by a deep understanding of our users needs, creating uncompromising holsters that prioritize a fast draw and safe reholstering, allowing civilians and professionals to perform with confidence by knowing they have the most reliable equipment by their side.



RAPID FORCE®

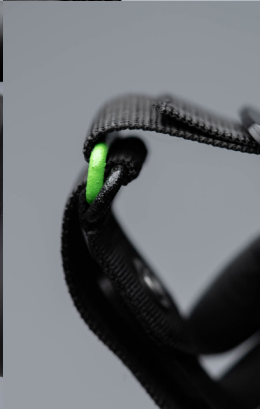
TAQ-STRAP®

Stay in the Fight with the first integrated tourniquet gear strap, strategically pre-positioned for comfortable deployment, ensuring bloodflow restriction to extremities on duty or the battlefield.

ERGONOMIC RATCHETING SYSTEM
Prioritize accuracy and unparalleled control with micro-adjustments, precise pressure, optimal tightness and a secure grip even in the presence of contaminants.

INTUITIVE APPLICATION
The TAQ-Strap Integrated Tourniquet utilizes the same battle-proven ratcheting technology found in M2 Inc's TCCC-approved R.M.T. It is simple and can be applied with one hand.

UNIVERSAL FIT
Compatible with any gear bags or rigid holster mounts utilizing a 1.5" or larger strap - seamlessly integrates with various equipment such as gas masks, IFAK, drop leg holsters, taser holsters, ballistic shoulder pads and more.





RAPID FORCE® LEVEL III HOLSTER

The Rapid Force Level III duty holster is the quickest, most secure and durable holster on the market – all while achieving the highest level of retention.

- Axon Signal Sidearm Compatible
- Maximum Trigger Protection
- Removable MRDS Hood
- Suppressor Height Sights (.475")
- Available in Black, Tan, and Basketweave



AXON SIGNAL SIDEARM
COMPATIBLE
Sensor not included



RAPID FORCE® LEVEL II HOLSTER

The Rapid Force Level II holster's profile sets it apart from others in its category. The design incorporates dual retention mechanisms, combining the inherent passive retention with an active thumb swipe, making it a favored choice for OWB carry.

- Axon Signal Sidearm Compatible
- Optic Ready
- Fast, Intuitive Draw
- Slim Profile Design
- Available in Black and Tan



AXON SIGNAL SIDEARM
COMPATIBLE
Sensor not included



PHOTON® LEVEL I HOLSTER

The Photon is a slim and lightweight holster utilizing professional grade materials to provide an all-in-one solution for every day concealed carry.

- Ambidextrous Design
- IWB or OWB Flexibility
- Optic Ready
- Adjustable Cant and Ride Height



BELT SLIDE
Choose between high, mid and low ride options to find the perfect positioning for comfort and versatility.



DYNAMIC DROP LEG
Engineered with a minimalist design, the Dynamic Drop Leg provides unmatched security, increased range of motion and conserves valuable leg space.

QUICK DISCONNECT SYSTEM (QDS)

An innovative solution that effortlessly connects or detaches a holster from our multi-carry platforms with a satisfying click.



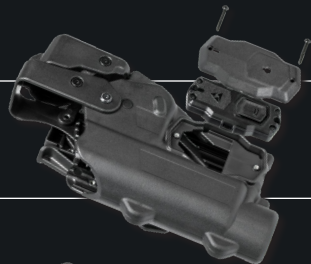
LOCKING BELT SLIDE

Designed for maximum security to ensure the holster stays firmly attached to your belt - no matter the pressure applied.



RAPID FORCE® CARRY TYPES

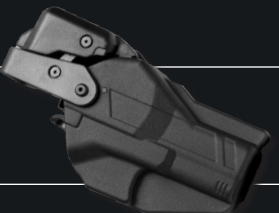
RAPID FORCE® LEVEL III DUTY
LARGE LIGHT



RAPID FORCE® LEVEL III DUTY
COMPACT LIGHT

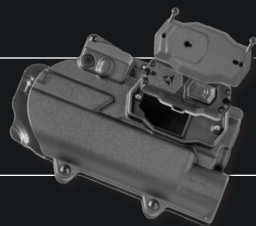


RAPID FORCE® LEVEL III DUTY
NO LIGHT

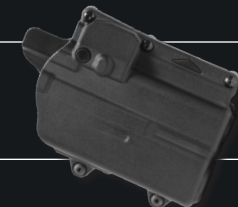


NEW

RAPID FORCE® LEVEL II
LARGE LIGHT



RAPID FORCE® LEVEL II
COMPACT LIGHT



RAPID FORCE® LEVEL II
NO LIGHT

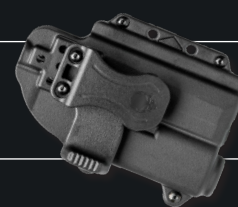


COMING SOON

PHOTON®
LARGE LIGHT



PHOTON®
COMPACT LIGHT



PHOTON®
NO LIGHT



MOLLE ADAPTER
A carry solution for tactical vests, battle belts, backpacks or any items equipped with webbing.



PADDLE
This mount features a wide base for stability and a retention lip for added security.



SURFACE MOUNT
Mount your Rapid Force holster to any hard surface.



TACTICAL ADAPTER
This allows you to mount your Rapid Force holster shell onto your existing non-Rapid Force quick attachment system.



MULTI-HOLSTER ADAPTER
Facilitates the use of non-Rapid Force holsters within our expansive lineup of attachments and carry types.